



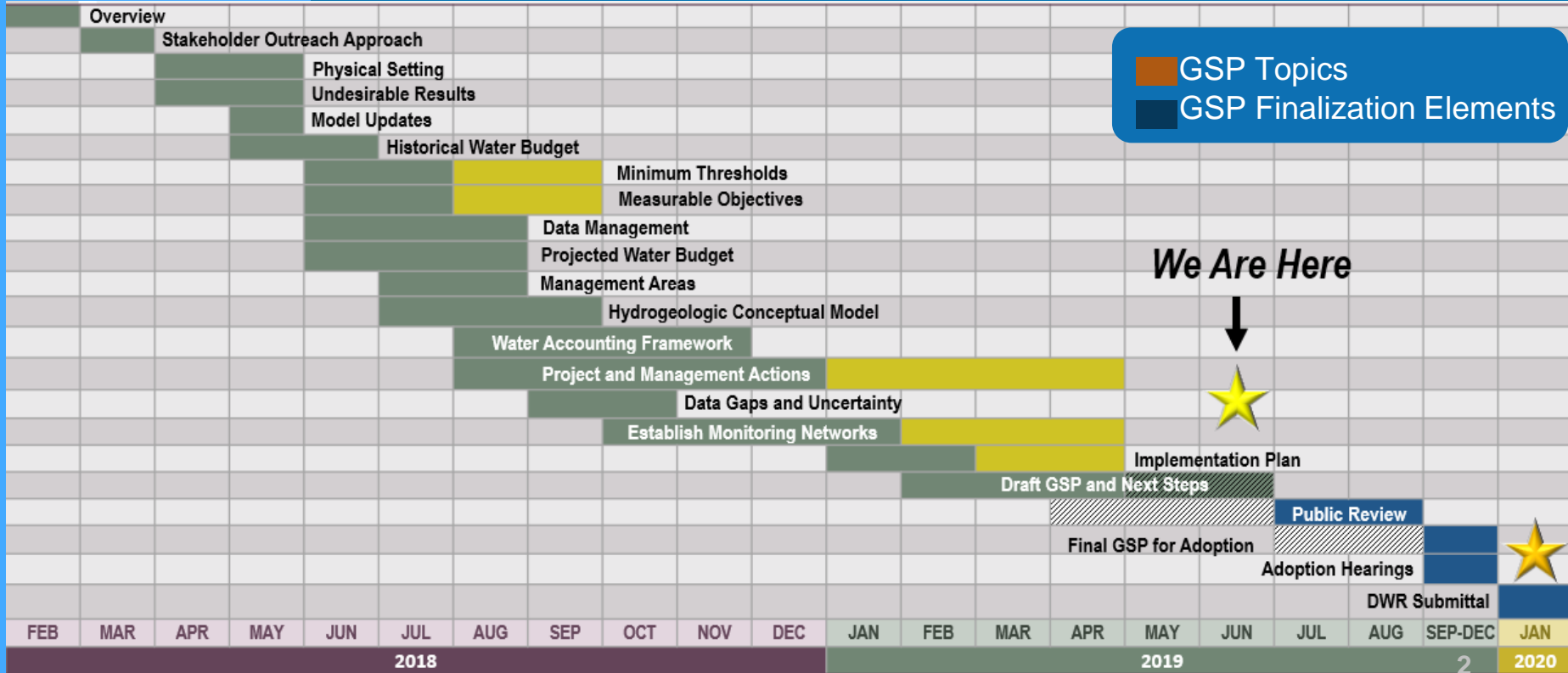
**EASTERN SAN JOAQUIN  
GROUNDWATER AUTHORITY**

# **Materials for GSA Outreach June 2019**

# GSP Topics & Project Schedule



EASTERN SAN JOAQUIN  
GROUNDWATER AUTHORITY



■ GSP Topics  
■ GSP Finalization Elements

**We Are Here**





# Bundles 1-3: Draft Chapters Overview

# Draft GSP Chapters – Bundle 1

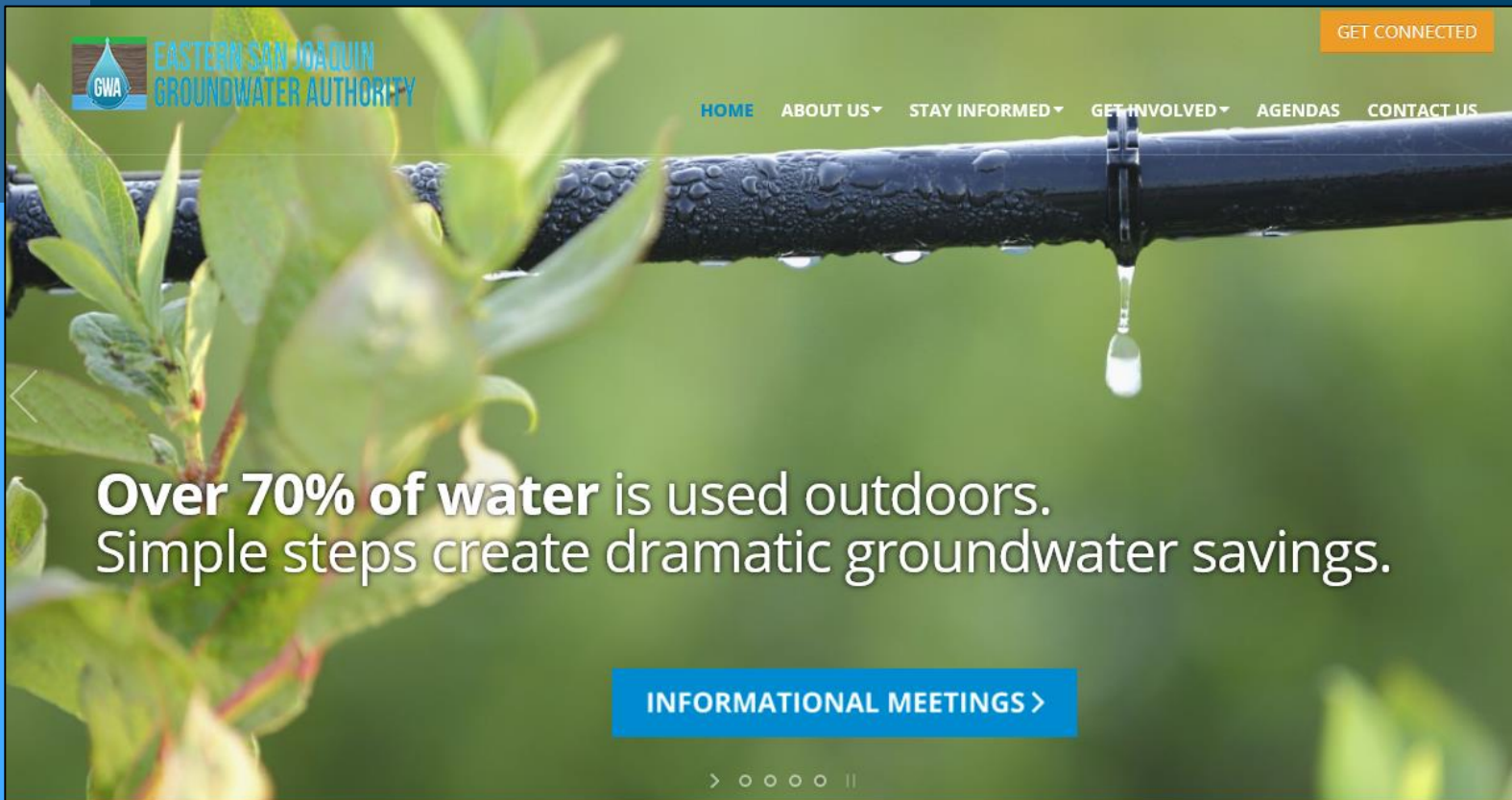


EASTERN SAN JOAQUIN  
GROUNDWATER AUTHORITY

Bundle 1 is posted to website homepage:  
[www.esjgroundwater.org](http://www.esjgroundwater.org)

- Text includes includes:
  - Administrative Information
  - Plan Area
  - Hydrogeologic Conceptual Model (HCM)
  - Data Compilation
  - Data Management System (DMS)
- Comments were due on June 1, 2019. There will be additional opportunity to comment on the complete Public Draft GSP.





Over 70% of water is used outdoors.  
Simple steps create dramatic groundwater savings.

[INFORMATIONAL MEETINGS >](#)

> ○ ○ ○ ○ ○ ||

[Draft GSP Chapters Bundle 1](#)

# Draft GSP Chapters – Bundles 2 and 3



EASTERN SAN JOAQUIN  
GROUNDWATER AUTHORITY

Bundles 2 and 3 will be posted to website homepage soon:  
[www.esjgroundwater.org](http://www.esjgroundwater.org)

- Text includes includes:
  - Water Budget
  - Current and Historical Groundwater Conditions
  - Sustainable Management Criteria
  - Monitoring Network
- Comments are due on July 1, 2019. There will be additional opportunity to comment on the complete Public Draft GSP.

# Draft GSP Public Comment Period



EASTERN SAN JOAQUIN  
GROUNDWATER AUTHORITY

- Full public draft (all chapters) will be released for public comment July 10 – Aug 25. Comments are due Aug 25.
- The fourth informational meeting will be held during the public comment review period (July 18)



# Fourth Informational Meeting



# Fourth Informational Meeting



EASTERN SAN JOAQUIN  
GROUNDWATER AUTHORITY



**July 18<sup>th</sup> , 5:00-8:00 PM**

**Robert J. Cabral Agricultural Center  
Assembly Room 1  
2101 E. Earhart Ave.  
Stockton, CA**

- Format will be open house style beginning with a brief presentation
- Focus will be on the Draft GSP Public Comment Period
- Outreach materials will be sent to GSAs and posted to website



# **Outreach & Groundwater Sustainability Workgroup Update**

# Groundwater Sustainability Workgroup Update



EASTERN SAN JOAQUIN  
GROUNDWATER AUTHORITY

- 7 Workgroup members and 2 members of the public attended the Groundwater Sustainability Workgroup meeting held on May 18th
- The next Workgroup meeting will be held on June 12<sup>th</sup> at 4:00pm at the San Joaquin County Public Works Department
- Notes from Workgroup meeting are available on the website, [esjgroundwater.org](http://esjgroundwater.org) (under 'Agendas' tab)
- Workgroup focused on review Bundle 1 drat chapters and implementation plan discussion

# Groundwater Sustainability Workgroup Update



EASTERN SAN JOAQUIN  
GROUNDWATER AUTHORITY



1810 E. Hazelton Avenue  
P. O. Box 1810  
Stockton, CA 95201

(209) 468-3089  
ESJgroundwater@sjgov.org  
esjgroundwater.org

Eastern San Joaquin Groundwater Authority Groundwater Sustainability Workgroup  
May 8, 2019  
4 – 5:30 p.m.  
San Joaquin County Public Works Department  
1810 E. Hazelton Ave., Stockton, CA  
Conference Room A

## Agenda

- I. Welcome
- II. Meeting Objectives
- III. Bundle 1 – Draft Chapter Overview
  - Presentation and Discussion: Review HCM requirements and discuss draft chapters
- IV. Implementation Plan
  - Presentation and Discussion: Review and discuss approach for GSP implementation
- VI. Announcements
  - Bundle 2 Draft Chapter is anticipated to be posted in June
- VII. Other Topics
  - a. Non-agenda Items
  - b. Public Comment



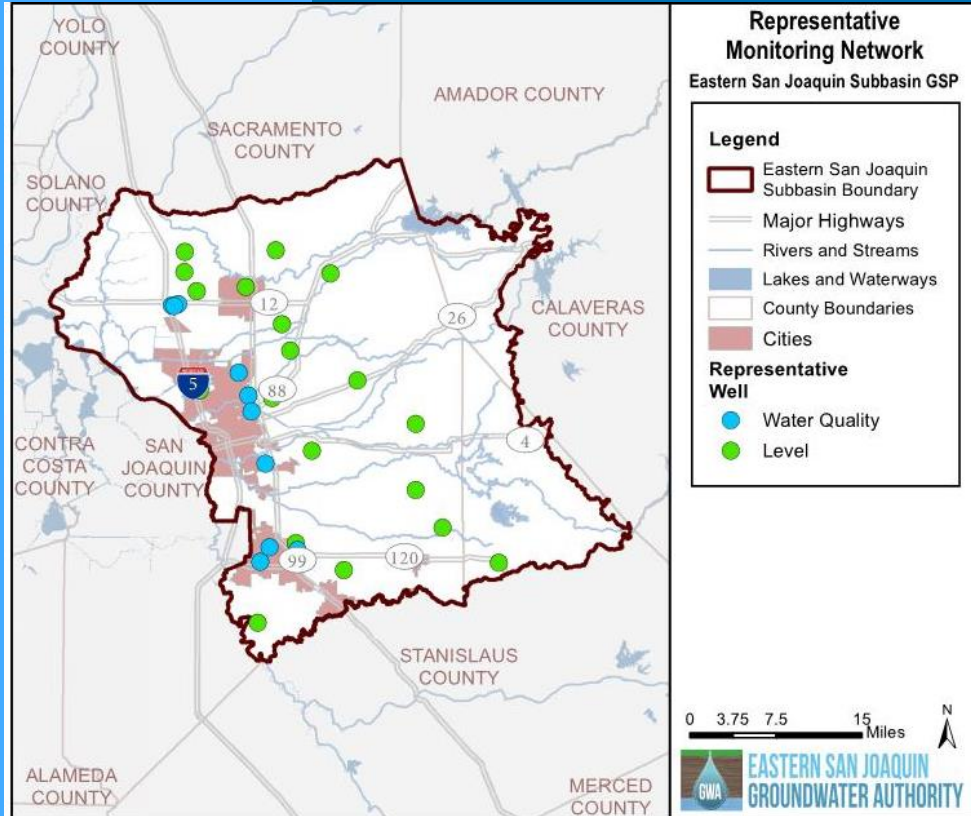


# Monitoring Network

# Representative Monitoring Network Wells



EASTERN SAN JOAQUIN  
GROUNDWATER AUTHORITY



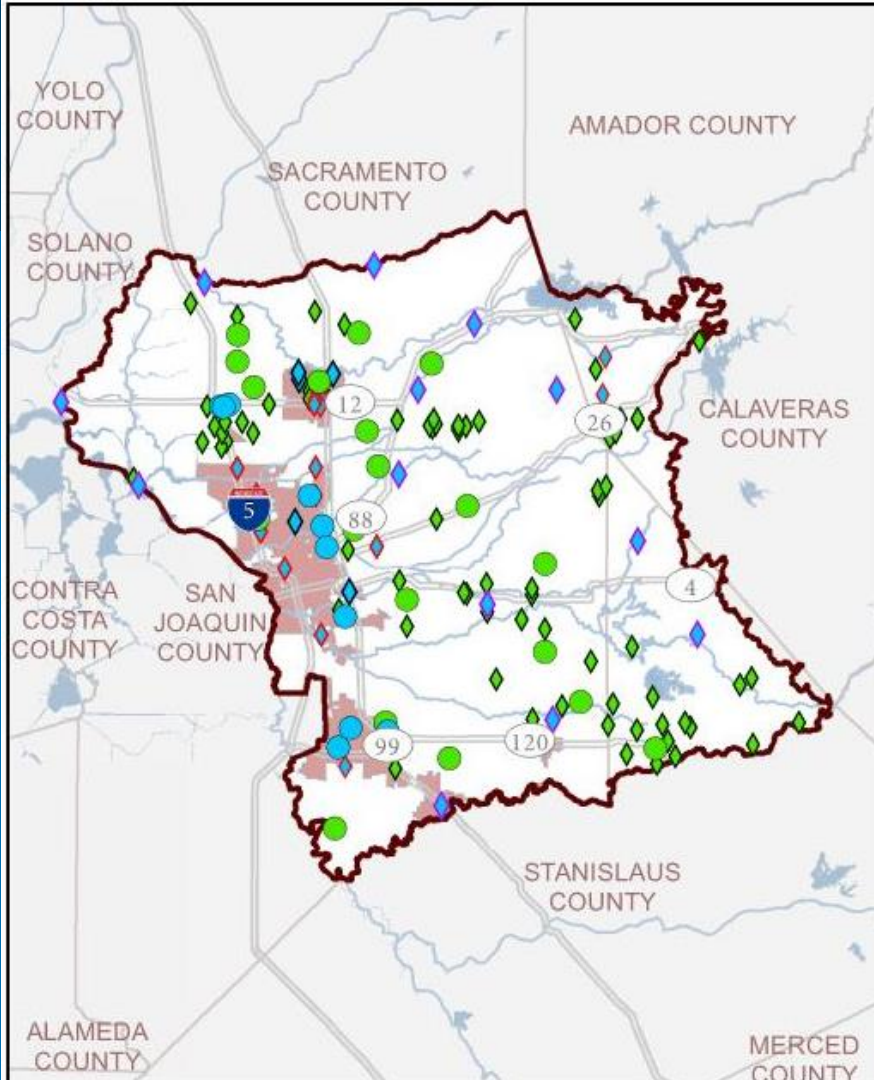
## Includes:

- Dedicated Threshold Wells for GW Levels (19)
- Dedicated Threshold Wells for GW Quality (10)



# Broad Monitoring Network

- Representative monitoring and additional broader network



## Broad Monitoring Network Eastern San Joaquin Subbasin GSP

### Legend

- Eastern San Joaquin Subbasin Boundary
- Major Highways
- Rivers and Streams
- Lakes and Waterways
- County Boundaries
- Cities

### Monitoring Wells (MW)

- Existing Representative MW
- Existing Broad Network MW
- Existing Broad Network MW - Nested &/or Clustered
- New Broad Network MW

### Sustainability Indicator Monitored

- Water Quality & Level
- Level



# Monitoring Network



Well Type	#	Monitoring Network	Constituent Monitored		Proposed Frequency
			Elevation	Water Quality	
Dedicated Level Threshold	19	Representative Monitoring	X		Semi-Annually
Dedicated Groundwater Quality Threshold	10	Representative Monitoring	X	X	Semi-Annually
CASGEM Wells (Official)	76	Broad	X		Semi-Annually
Nested &/or Clustered Wells	16	Broad	X	X	Semi-Annually
TSS Wells + 10 New Wells (Planned)	12	Broad	X	X	Semi-Annually
Additional local wells in water quality network	5	Broad	X	X	Semi-Annually





# Groundwater Dependent Ecosystems

# Methodology and Results



- Today we are presenting the methodology for identifying GDEs in the Subbasin
- GSA Staff and GW Sustainability Workgroup has seen draft GDE areas, methodology and feedback has been requested (Workgroup did an exercise to mark up maps)

# Preliminary Methodology for Assessing GDEs



EASTERN SAN JOAQUIN  
GROUNDWATER AUTHORITY

- DWR's Natural Communities Commonly Associated with Groundwater (NCCAG) dataset was used, developed with The Nature Conservancy
- Areas with access to supplemental water supplies were removed, including
  - Managed wetlands and areas without shallow groundwater
  - Areas adjacent to canals and ditches, irrigated ag fields, losing streams, perennial rivers, and managed wetlands.



# Full NCCAG Dataset




EASTERN SAN JOAQUIN  
GROUNDWATER AUTHORITY

## Eastern San Joaquin Subbasin NCCAG

Eastern San Joaquin Subbasin GSP

### Legend

 Eastern San Joaquin  
Subbasin Boundary

 Vegetative NCCAG

 Wetland NCCAG

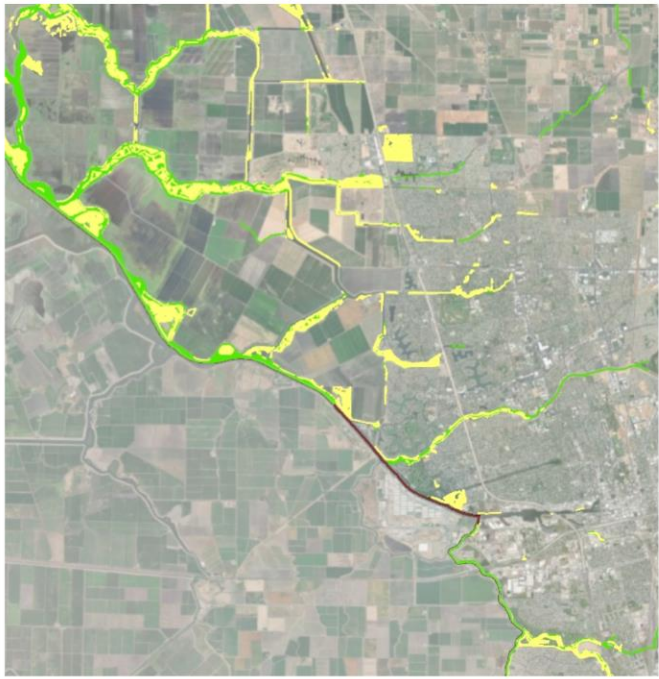
NCCAG: Natural Communities  
Commonly Associated  
with Groundwater

GDE: Groundwater Dependent  
Ecosystems

0 1 2 3 4 5 10 Miles



EASTERN SAN JOAQUIN  
GROUNDWATER AUTHORITY





# Identifying NCCAGs Likely to Access Non-groundwater Water Supplies



## Identified GDEs and NCCAGs not Identified as GDEs

Eastern San Joaquin Subbasin GSP

### Legend

- Eastern San Joaquin Subbasin Boundary
- NCCAG GDEs**
- NCCAG Vegetative GDE
- NCCAG Wetland GDE
- NCCAG Not GDEs**
- Depth to Water > 30 ft.
- Managed Wetland
- Adjacent to Agriculture
- Perennial Surface Water Bodies

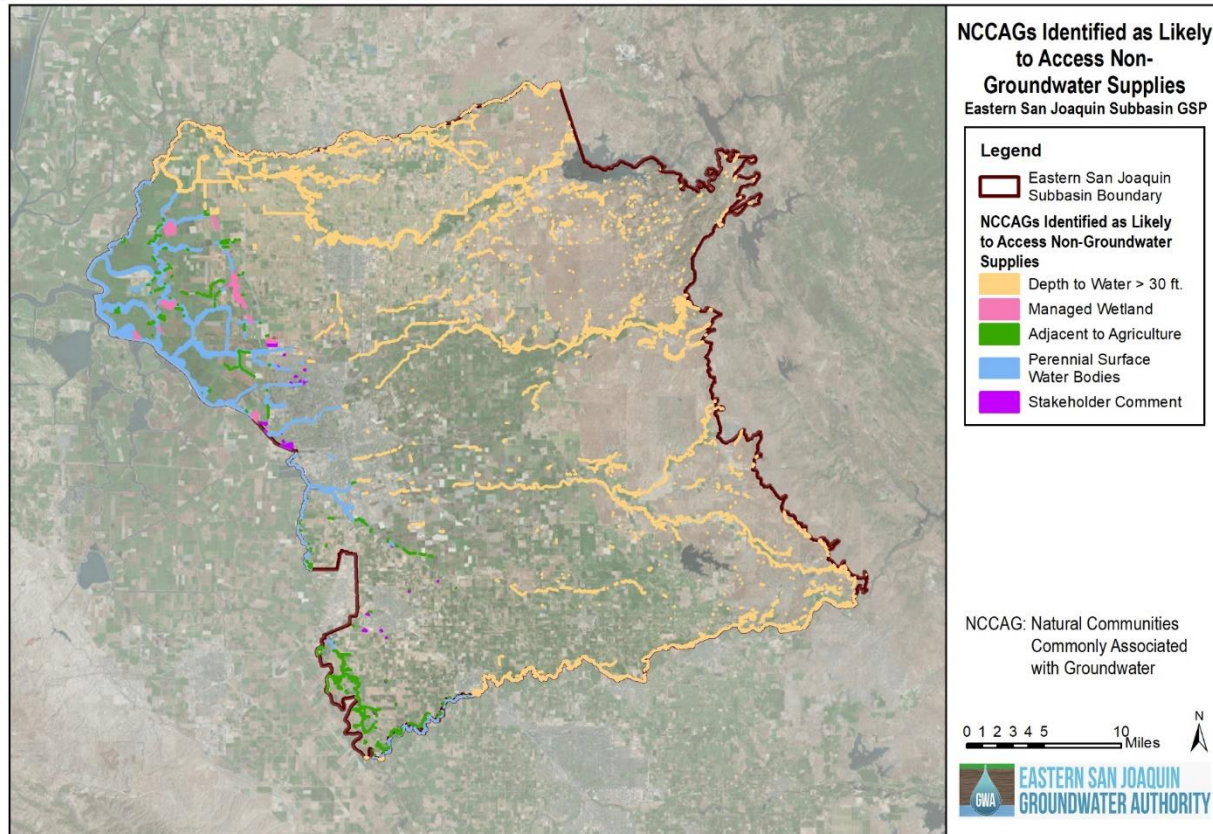
NCCAG: Natural Communities Commonly Associated with Groundwater  
GDE: Groundwater Dependent Ecosystems



## Buffers Used

DTW 30+ ft.	Drawn from area of shallow DTW measurements
Managed Wetland	150 ft.
Adjacent to Ag.	50 ft.
Losing or Perennial Streams	150 ft.
Canals and Ditches	150 ft.

# Incorporating Stakeholder Comments



- Areas shown in purple were removed as potential GDEs from stakeholder feedback (groundtruthing)







# Inter-basin Coordination

# Inter-Basin Coordination



EASTERN SAN JOAQUIN  
GROUNDWATER AUTHORITY

Next Step: Reach out to neighboring subbasins

- Cosumnes (2022 timeline)
- South American (Alternative plan)
- Solano (2022 timeline)
- Tracy (2022 timeline)
- Modesto (2022 timeline)
- East Contra Costa (2022 timeline)